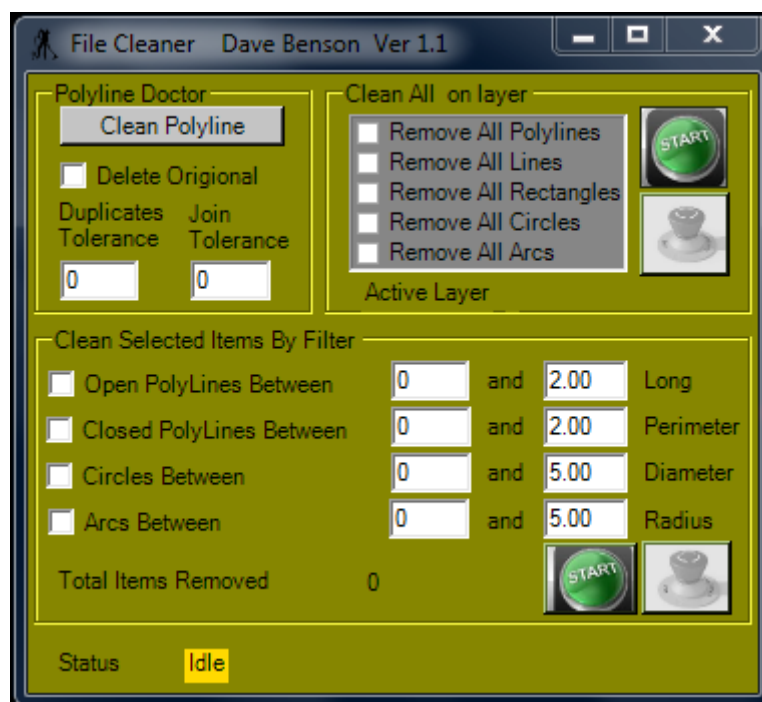
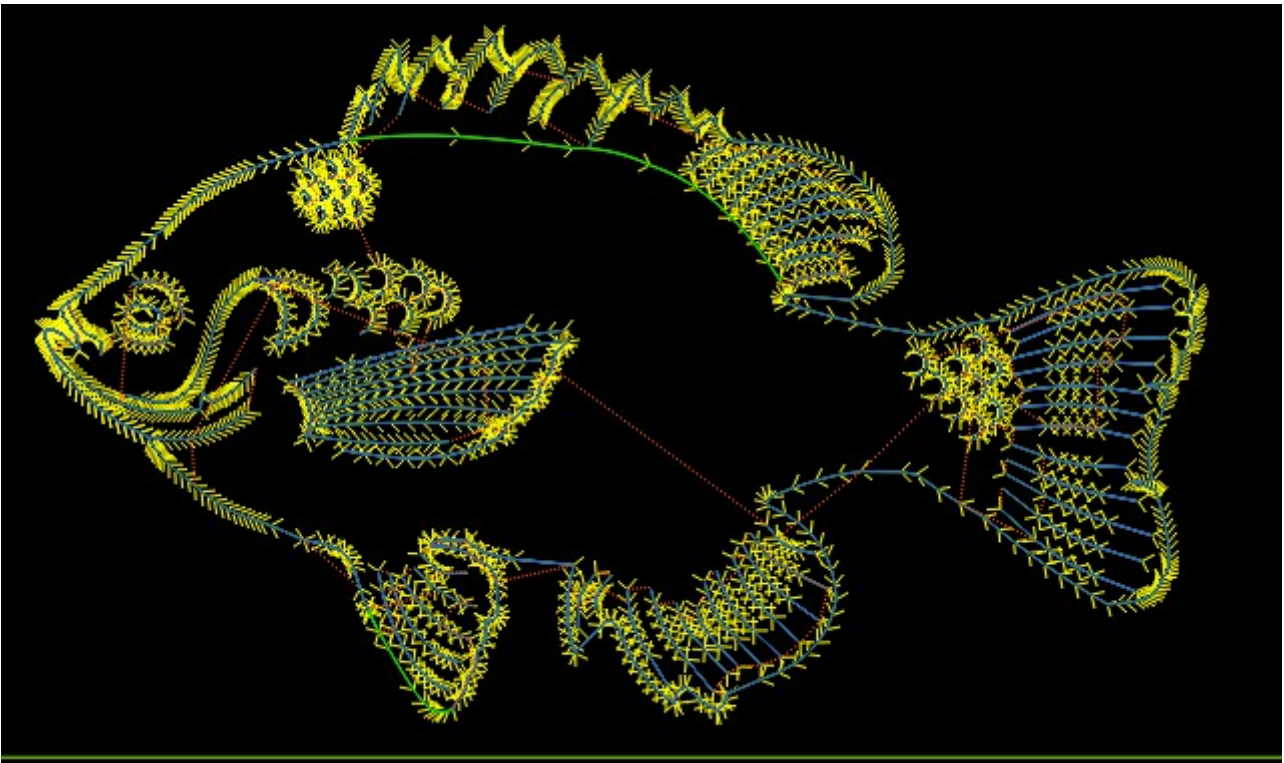


Instructions for a file cleaning plugin for CamBam Release

CamBam plus [0.9] Rel 8P (beta-2)
Copyright © 2013 HexRay Ltd

CamBam.CAD : 0.9.5035.22791
CamBam : 0.9.5035.22792
Build Date : 14/10/2013 1:39:42 PM
Framework Version : 2.0.50727.5485





If you are new to CNC machining and cad/cam a little background.

This is engraving .dxf file downloaded from CNCzone.

There are many files here for you to download and use for you engravings, and for the most part the newer files are ready to engrave without any preperation.

However there are a lot of older files that you will have to do some work with to make a satisfactory engraving. These files have been converted from a jpeg or bitmap image file and processed with Inkscape and other vector graphic programs or cad programes like Autocad and clones.

You can download the files here:

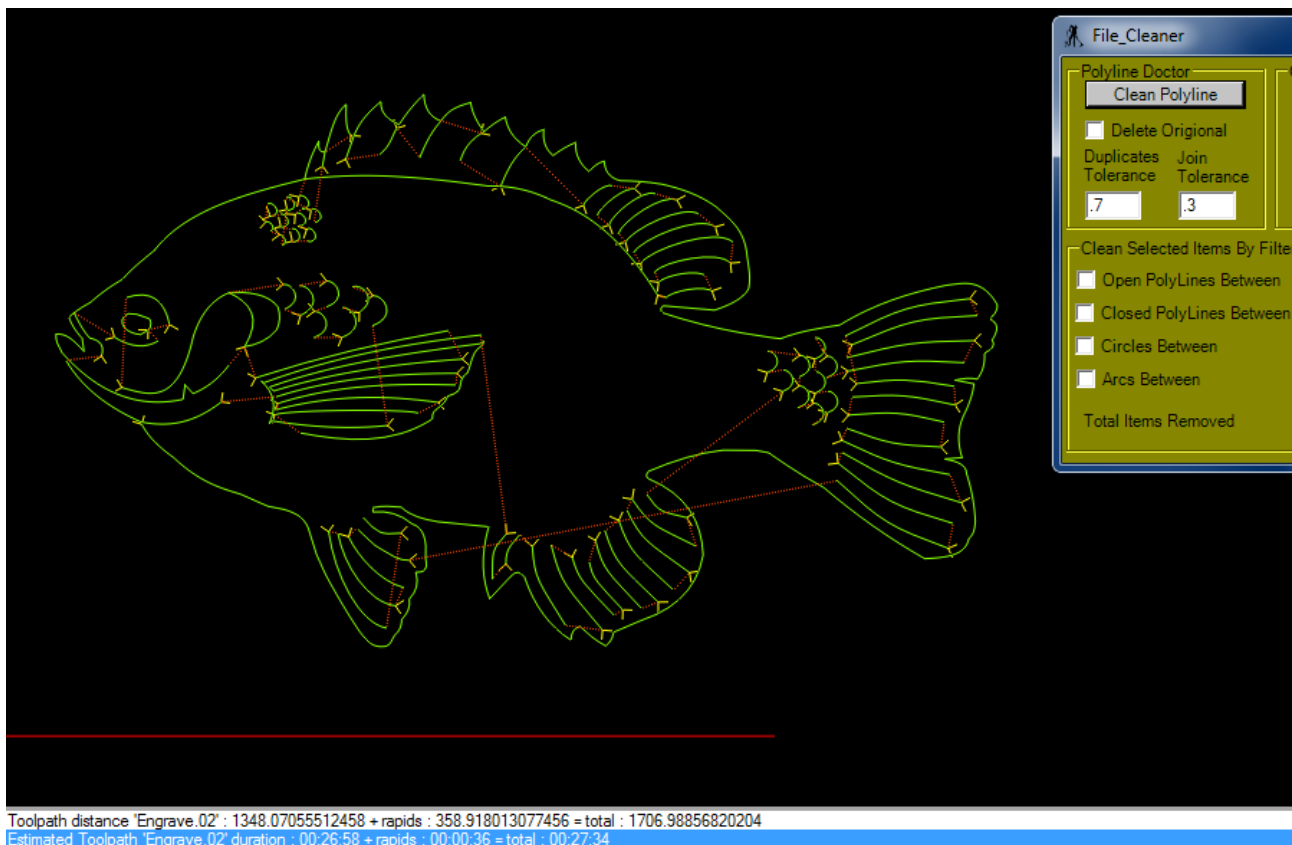
<http://www.cnczone.com/forums/general-metalwork-discussion/19346-share-files-part-art.html>

The first picture is of the Blue Gill.dxf as downloaded from cnczone and as you can see It's not ready to apply an engraving mop as there are many open polylines and other problems which have caused among other things hundreds of moves to the clearance plane.

So not only would the file not produce a nice engraving but would take a long time to produce.

The second picture is of one pass with the polyline doctor which has removed the open poly's removed any overlaps and put all of the geometry at Z = zero and produced a file that simulates ok with minimum moves to the clearance plane.

Of course on this and other files you may need to run another pass or passes or repair just small areas as needed.



Here is wherer the cleaning utility that comes in handy for cleaning up files to be used for engraving.

- 1.You can remove all of a particular type of drawing entity. eg. lines, polylines, circles ect.
- 2.You can remove some types of drawing entities with a filter. eg. lines, polylines, circles ect.
- 3.You can clean polylines so they will engrave correctly.

When you clean a polyline/s the line/s will be cleaned and put on a separate working layer and you will be given the opportunity to delete or keep the original lines.
You can undo all of your actions.

Also as a part of the download for this utility, a .cb file with the before and after shots of the toolpath generation and an explanation of how the polyline doctor input variables affect the generation of the new lines.

